

Smith & Wesson 22A-1 Disassembly



As you go through these pictures please disregard the filth that is going to appear when the parts are removed. I had no idea that this was so dirty.

It just goes to show that when an area is not easily accessible it accumulates a lot of dirt and grime from normal usage.

Begin by insuring the gun is unloaded and safe to work on.
Remove the Magazine, Barrel Assembly and Grips.

Removing the Spring Plate Assembly is how the disassembly process begins.

With a small flat bladed screwdriver lift up on the tab marked "A" and at the same time lift up on the area marked "B" "B" needs to be lifted because there is an alignment extension pin on the back side that is in a hole on the frame.

With these two areas lifted rotate the Spring Plate Assembly slightly counter clockwise.

This is shown in the next picture.



The Spring Plate Assembly is shown rotated with "A" and "B" free from their retention locations in the frame.

The plate is held in place by the Hammer Pin "C".
This pin has a slot that the plate slips onto.

The plate must be pushed towards the right as shown in the picture releasing it from the slot in the pin.

This is shown in the next picture.



The Spring Plate Assembly is shown here separated from the Hammer Pin.

The plate can now be removed from the frame.

It is not necessary to remove the spring on the left side of the plate.

The Slide Release Lever is not removable and can be cleaned without removing the spring.



Remove the Manual Safety "D" next

It slips over the Hammer Pin.

Use this picture as a reference how the Trigger Bar Assembly "E" and Magazine Safety Assembly "F" are installed.



This shows the Manual Safety removed from the Hammer Pin.



The next step is to release the Trigger Bar Assembly from the Magazine Safety Assembly.

These parts just unhook from each other.

Slide the Magazine Safety Assembly down in the slot and it will lift out from the frame.

The frame slot holds it in place and allows for the up and down motion.
It must be in the slot when reassembling and moving freely.

Please note that it can only be removed when it is matched up with the openings in the frame.
And

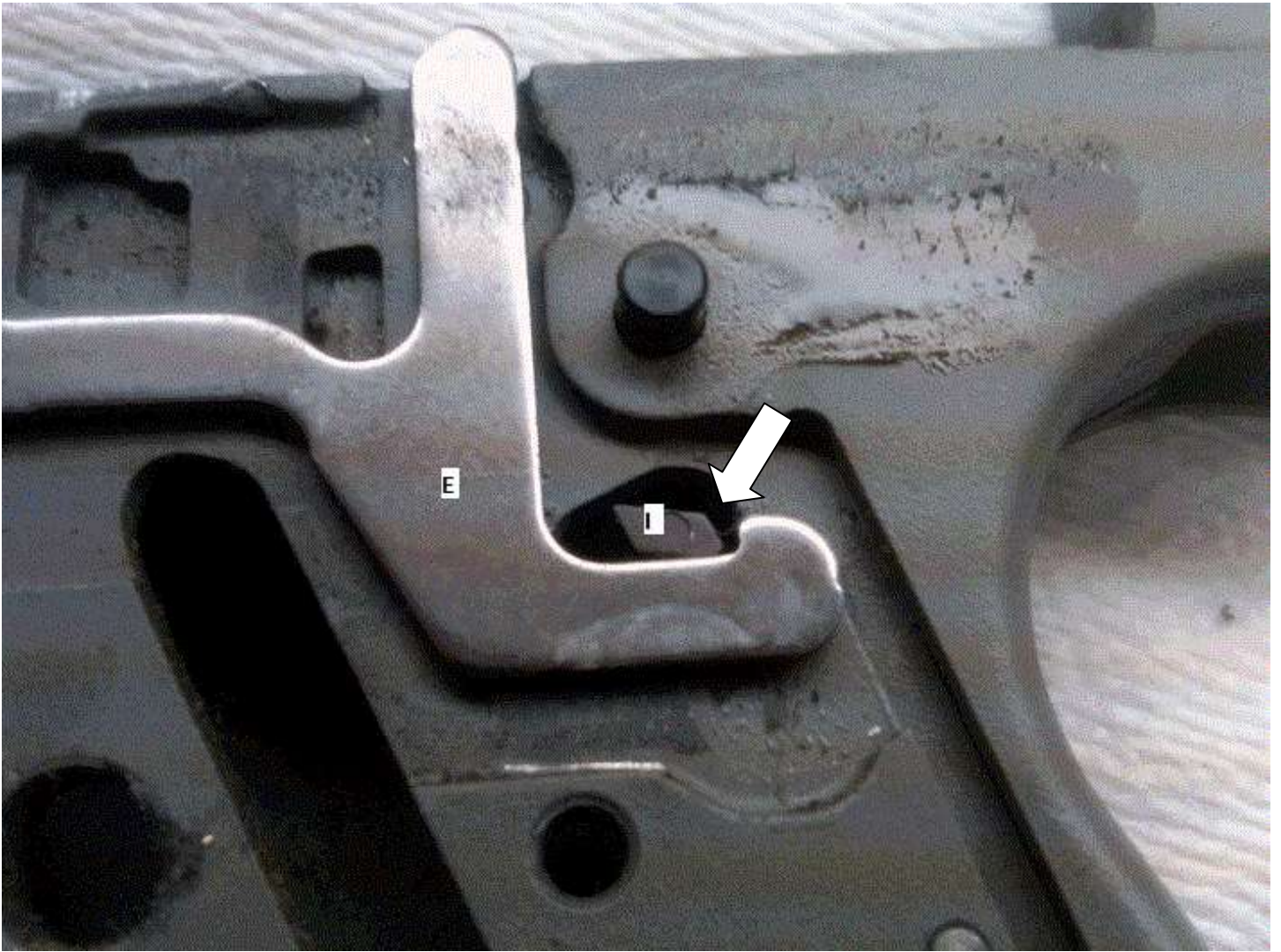
It can only be reassembled following the same alignment and correct placement in the slot in the frame.



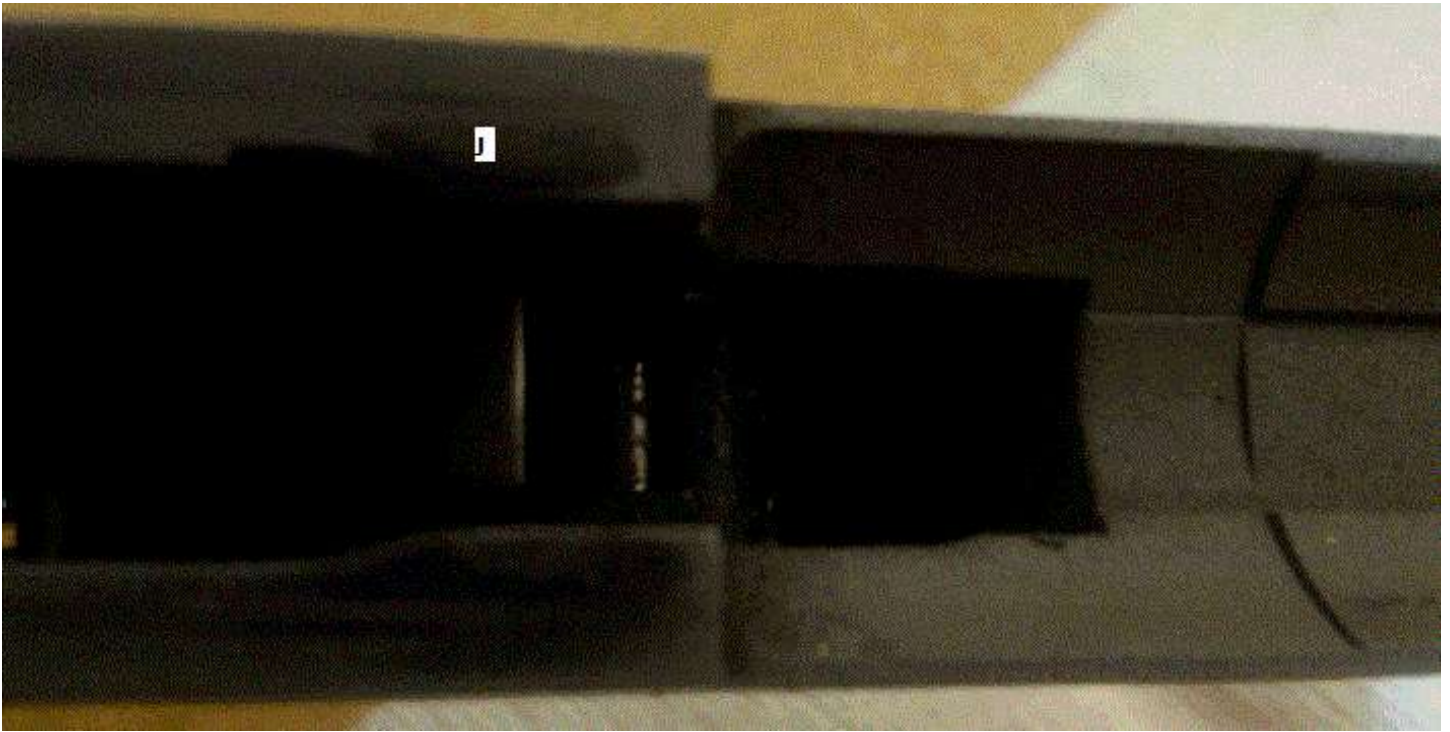
The Magazine Safety Assembly is shown removed from the frame.

"G" and "H" are the two areas that must be aligned before removing or installing.

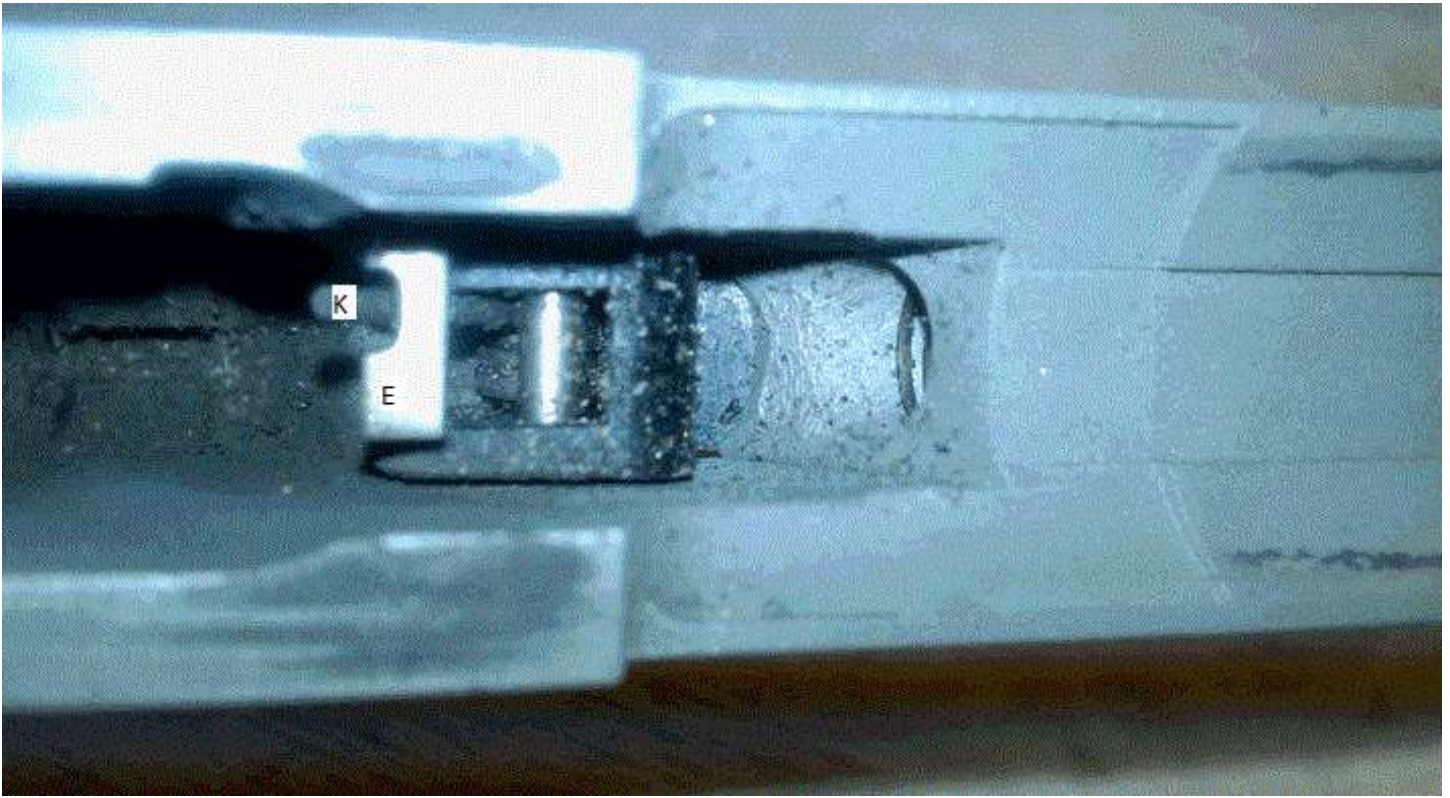
Please notice how the assembly fits into the slot in the frame as you are removing it. This is very important during reassembly.



This shows how the Trigger Bar Assembly "E" fits with the Sear "I".



This is not a very good picture but is intended to show that the Ejector "J" is located above the frame.

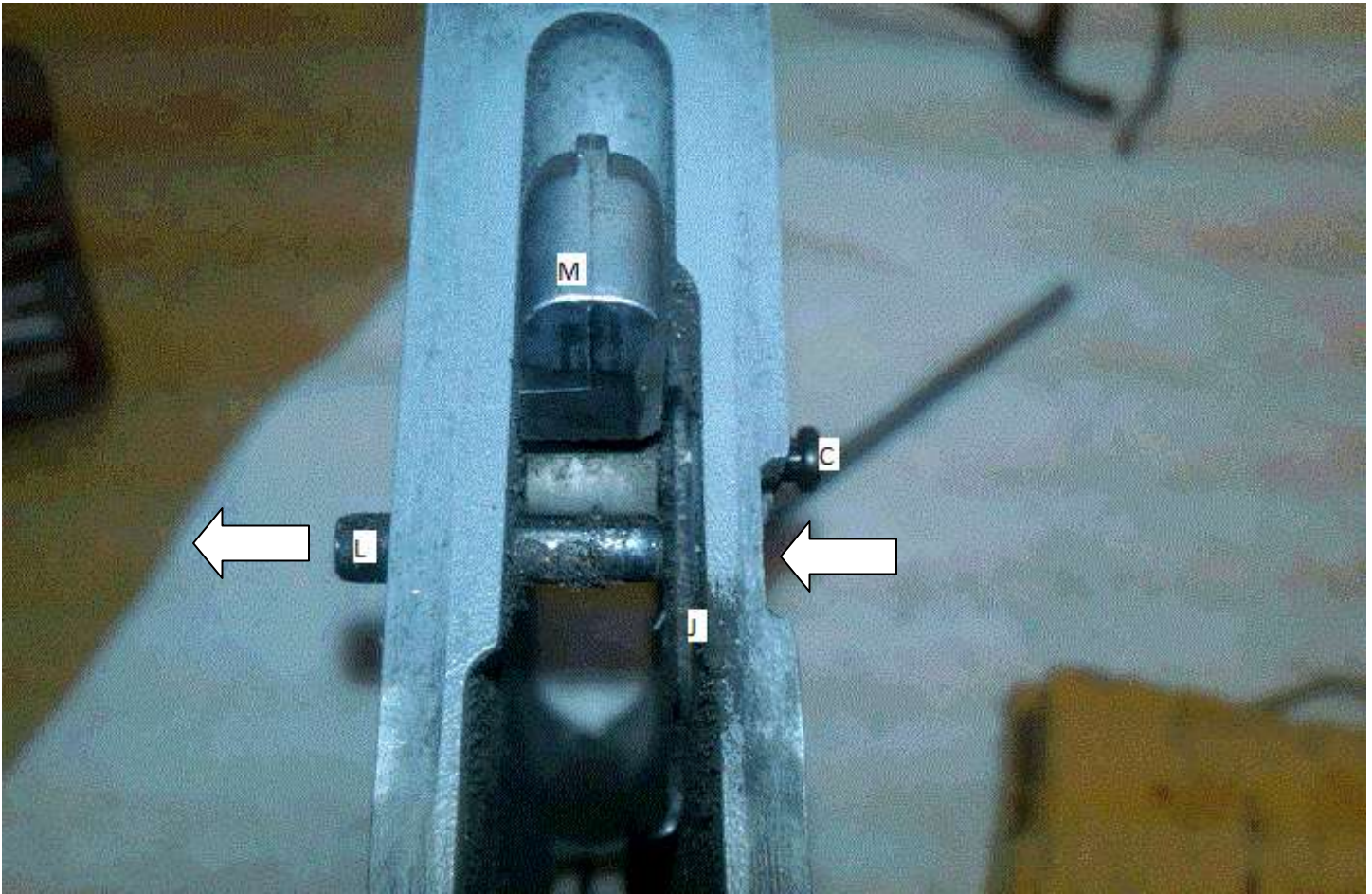


This is showing the position of the Trigger Return Spring "K" on the internal part of the Trigger Bar Assembly "E".



This shows the Trigger Bar Assembly removed from the frame.

Trigger Pin "Z" is shown in this picture and will be referenced in a later step.



This picture shows the direction that I removed the Hammer Stop Pin "L".
This is a steel rolled pin that required a punch and small hammer to remove it.

Remove it by carefully tapping it out with a straight punch about the same size as the pin.

This pin also is one of two pins used to hold the Ejector "J" in place.
When this pin is partially removed the Ejector will swivel down into the frame, but is still attached to the frame with the Hammer Pin "C".

Be sure that the Hammer "M" is locked back by engaging it with the Sear to relieve any pressure on the Hammer Stop Pin.



This shows how the Ejector "J" has swiveled down into the frame when the Hammer Stop Pin "L" has been partially removed.

The Hammer "M" is locked back by engaging with the Sear "I" to relieve any pressure on the Hammer Stop Pin.

With the Hammer locked back by the Sear you can now remove the Hammer Stop Pin.

There is spring tension on both the Sear and especially the Hammer, so be careful not to pinch or smash your fingers as you release it.

In the next step it is very important to be sure and hold the Hammer to be sure it is gently lowered forward.

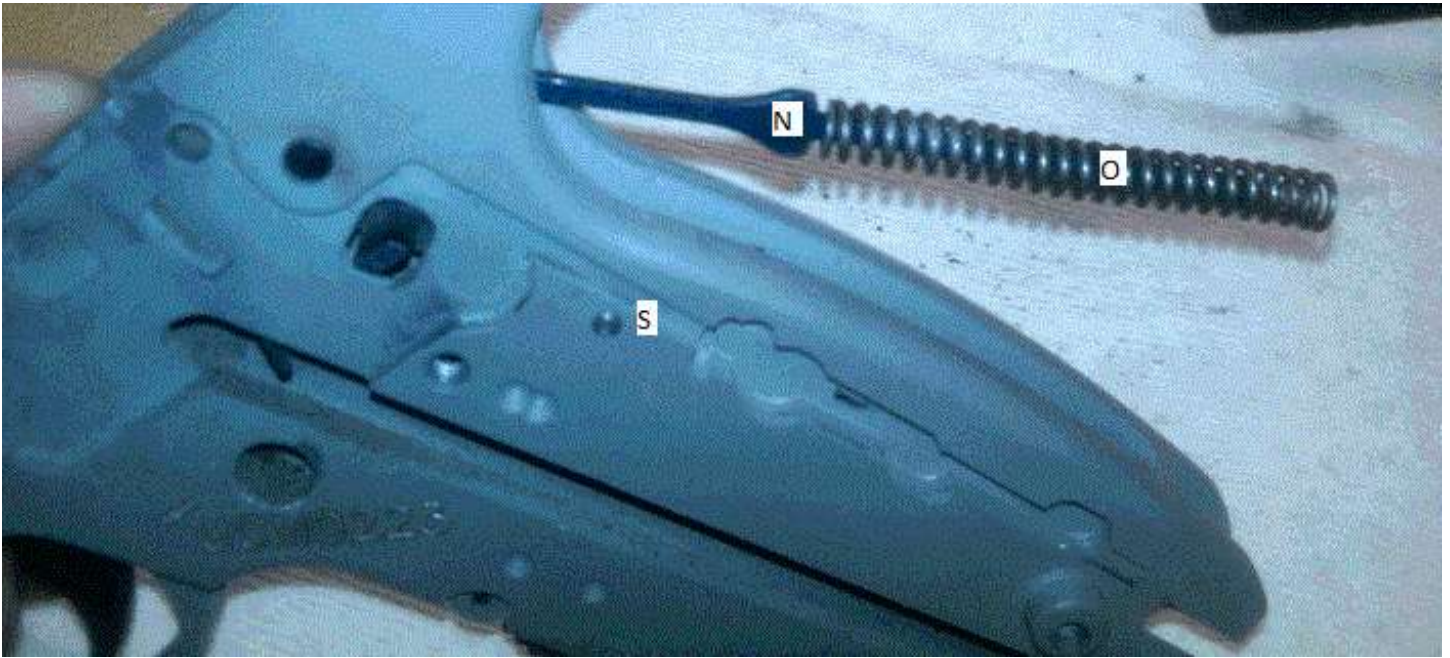
This will release the tension on the Mainspring Guide and if you just release it without holding the Hammer you will probably be looking for the Mainspring as it will go flying across your bench.



There is spring tension on both the Sear and especially the Hammer so be careful not to pinch or smash your fingers as you release it.

Hold the Hammer to be sure it is gently lowered.
Now slide the Sear forward to release it from the hammer.
This will release the tension on the Mainspring Guide.

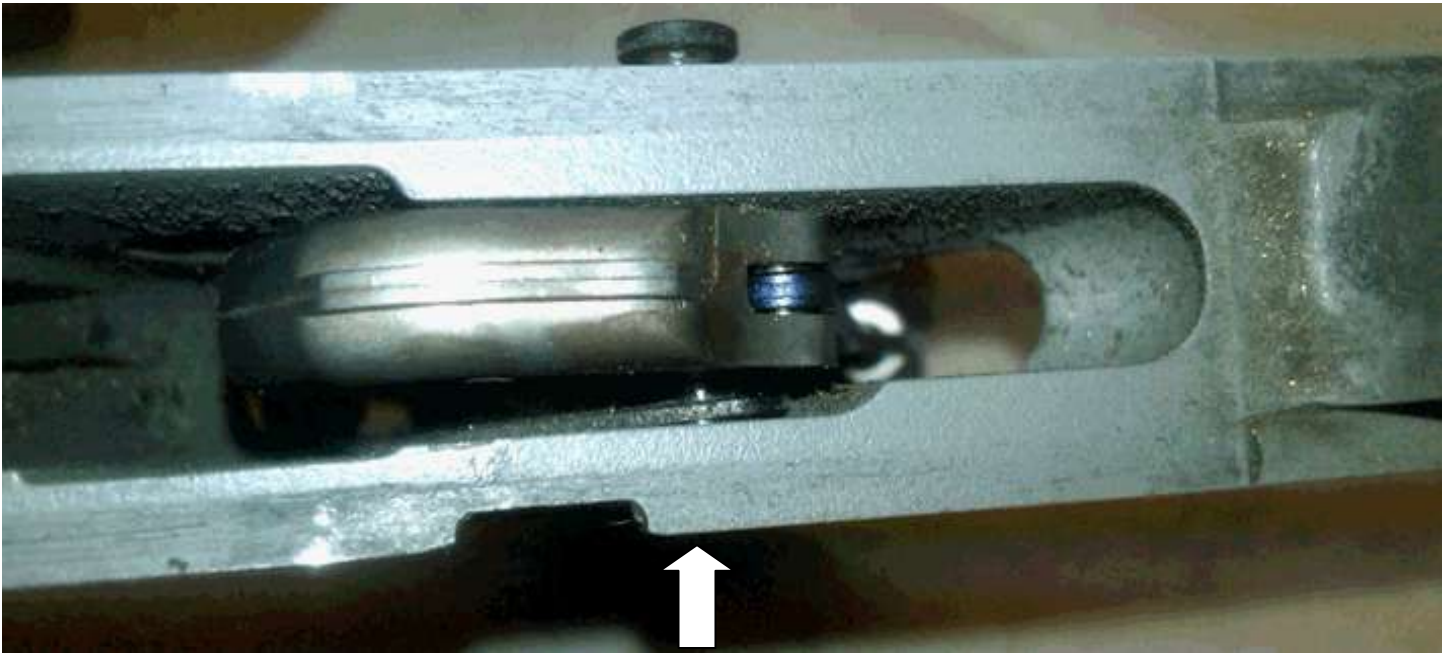
The Hammer is shown here after it has been released from the Sear.



At this time there is little pressure on the Mainspring Guide "N".

You will be able to remove the Mainspring Guide and Mainspring "O" from the frame support area. This will allow the Mainspring to be slid from the Mainspring Guide, but the Guide will still be attached to the Hammer.

The Sear Pin "S" is referenced in this picture and will be used in a later step.



You can now remove the Hammer Pin.
This will allow the Hammer, Ejector, and Mainspring Guide to be removed from the frame.



This is a picture of the Sear Spring "P".
It is held in place by the Sear Pin "S". (This was shown in two pictures back)

There are two very important things to note here.

1. Pay attention to how the Sear Spring is installed and positioned on the Sear Pin.
If you do not install this correctly you will not be able to completely seat the Magazine.
You will have to disassemble it again and install the Sear Spring correctly. (Don't ask how I know this just take my word on this one)
2. Watch very closely how the Sear comes out of the frame.
If you do not watch this, mine came out very easily, it just dropped out. Eventually I figured out that there was only ONE way it would go back in and it was not easy getting it twisted around and held in place to get the pin in to hold it.



The next thing to remove is the Trigger "T" and Trigger Return Spring "U".
This is removed by removing the Trigger Pin "Z" that was shown in a previous photo.

Note how the Trigger Return Spring is positioned on the Trigger before you remove it.



And there you have it.

A disassembled S&W 22A-1 ready for a very good cleaning and any worn parts replacement.

As it turns out I only replaced the Ejector, (which was my sole intention with learning this process). I did polish both sides of the Hammer just to make it look pretty and maybe be smoother when it is fired. Other than that I only cleaned and lightly lubed metal to metal or pivoting parts as I reassembled it all.

I choose not to remove the Take Down Button or the Magazine Catch because I was able to clean these still in the frame. I did use an air compressor to blow dry the parts and it worked very well to insure all of the crud was removed.

In order to reassemble, the directions need to be followed in reverse. The last parts removed become the first parts inserted.

I hope this helps someone out, and I will not take any responsibility for any of the content in this write up, so only take this project on if you are comfortable with your own ability and skill level.